

Active HEPA+ Pro Quickstart Guide

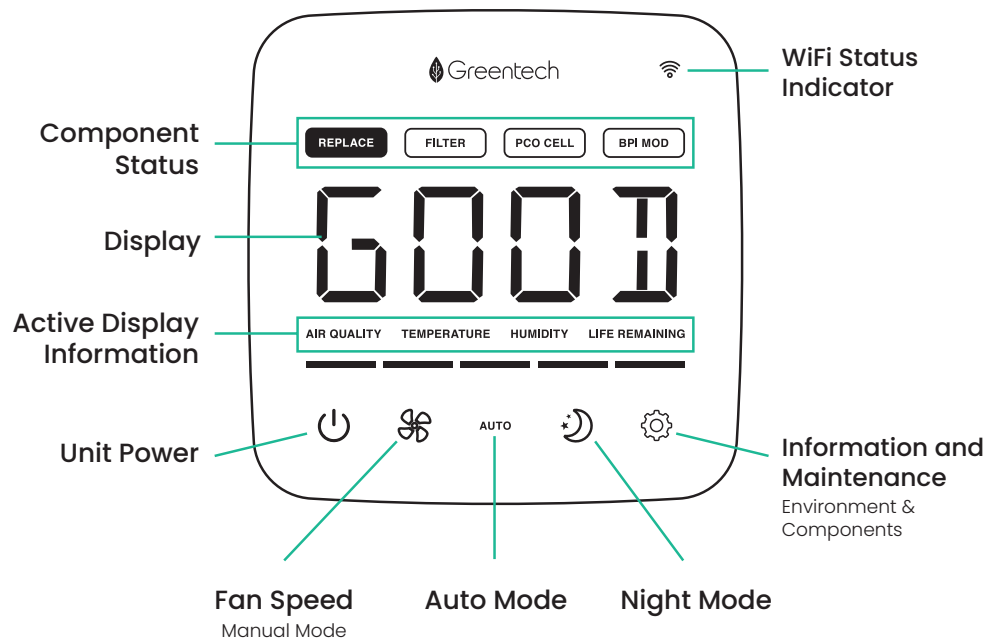


Get Started

1. Remove your unit from the packaging.
2. Press the button on the back of the unit and remove the top. Remove the plastic bag from the filter and replace the unit top.
3. Locate a suitable location to place your unit. An ideal location is an area of the room with good air circulation, away from the wall and your air return, or near the source of pollution.
4. Plug your unit into an outlet.
5. Press the Power Button and begin purification!



Control Panel Diagram

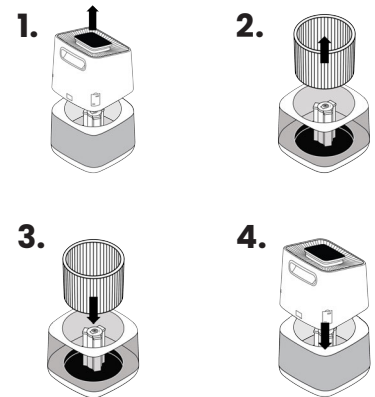


Scan this code for more product information or to watch a video on how to setup and use your Active HEPA+ unit. For any assistance, contact us at PAcleanair@greentechenv.com

Active HEPA+ Pro Part Replacement

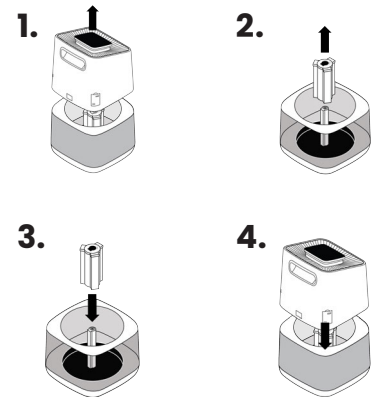
Filter Replacement

1. Remove the top.
2. Remove filter.
3. Replace with new filter.
4. Replace top.
5. Reset the Filter Life by navigating the information menu to the Filter Life screen and holding the information button until the life remaining changes to 100%.



PCO Cell Replacement

1. Remove the top.
2. Pull the PCO Cell straight up to remove it from the internal post.
3. Replace with the new cell by aligning the keys on the cell and post then slide it down until fully seated.
4. Replace top.
5. Reset the PCO Cell Life by navigating the information menu to the PCO Cell Life screen and holding the information button until the life remaining changes to 100%.



BPI Replacement

1. Remove the two screws located on the inner/top edge of the rear handle.
2. Remove the handle cover.
3. Remove the two BPI Brush Plugs by grabbing the tabs and lifting them up and out.
4. Replace with the new BPI Brush Plugs by inserting them into their color-coordinated outlets until they are fully seated.
5. Replace the handle cover and screws.
6. Reset the BPI Module Life by navigating the information menu to the BPI Module screen and holding the information button until the life remaining changes to 100%.

